

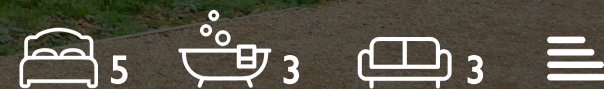
WE VALUE



YOUR HOME



Restwald Close, Benson  
£950,000





Set within the sought-after village of Benson, this beautifully presented five-bedroom detached home perfectly blends modern comfort, practicality, and style.

Enjoying views over open fields, this immaculate property offers generous and well-balanced accommodation throughout. The home comprises four double bedrooms and one single bedroom, a west-facing rear garden, off-street parking for four vehicles, and a double garage.

A grand entrance hall sets the tone on arrival, leading to a spacious kitchen/breakfast room, dining room, lounge, study, utility room, and a downstairs cloakroom—ideal for both family living and entertaining.

Upstairs, a bright and spacious open landing provides access to all bedrooms. The principal bedroom benefits from a dressing area and en-suite shower room, while bedroom two also enjoys its own en-suite. A modern family bathroom serves the remaining bedrooms, completing the thoughtfully designed layout.

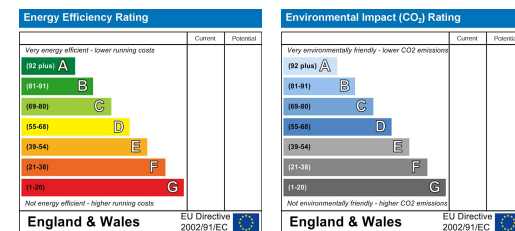
With its contemporary finish, light-filled living spaces, and highly desirable village location, this impressive home offers exceptional family living.





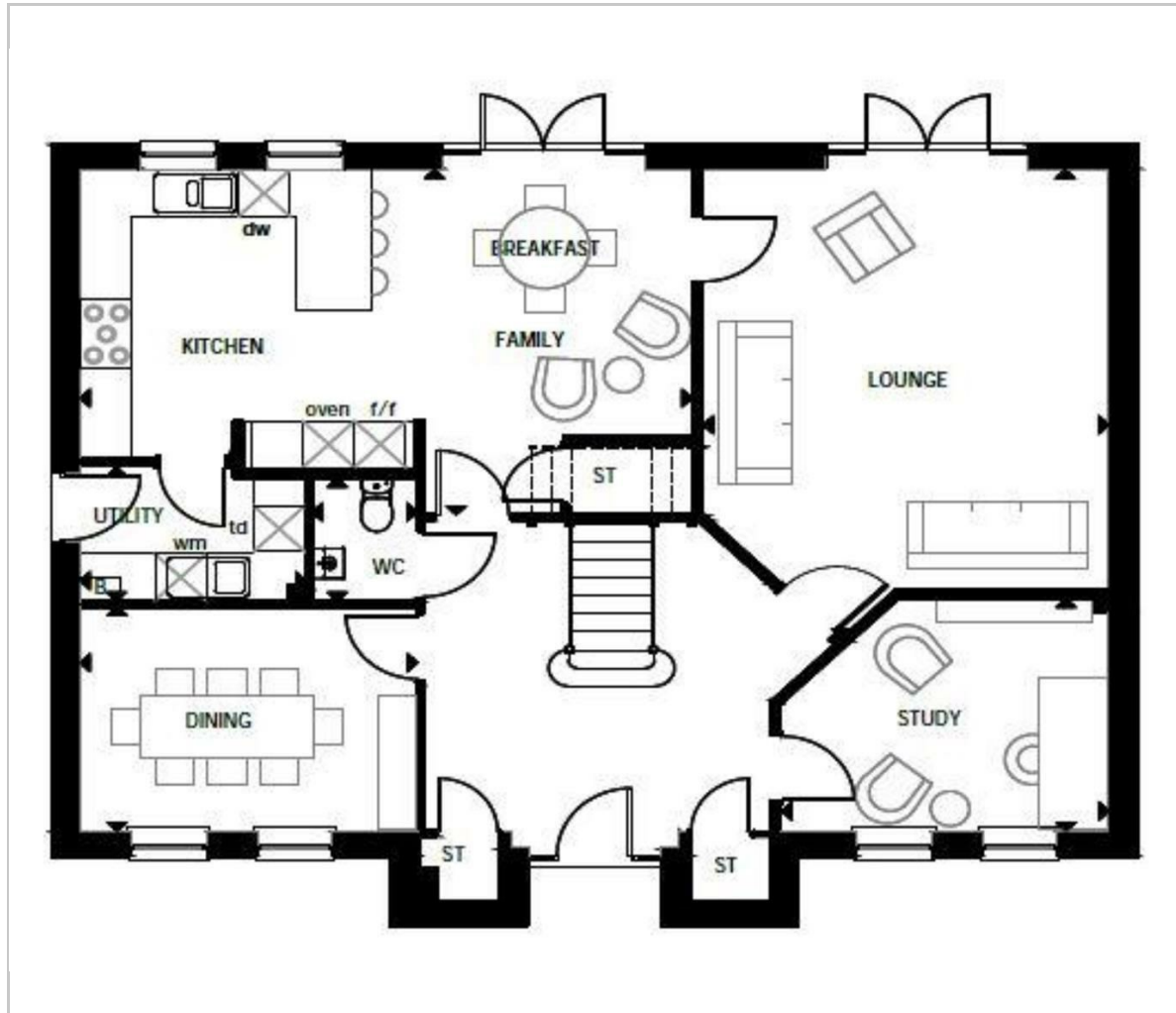


- VARIOUS INCENTIVES AVAILABLE
- OFFERED WITH NO ONWARD CHAIN
- WEST FACING REAR GARDEN
- THREE GENEROUSLY SIZED RECEPTION ROOMS
- FIVE BEDROOMS
- TWO EN-SUITES, FAMILY BATHROOM & DOWNSTAIRS CLOAKROOM
- UTILITY ROOM & STUDY
- GRAND ENTRANCE HALL

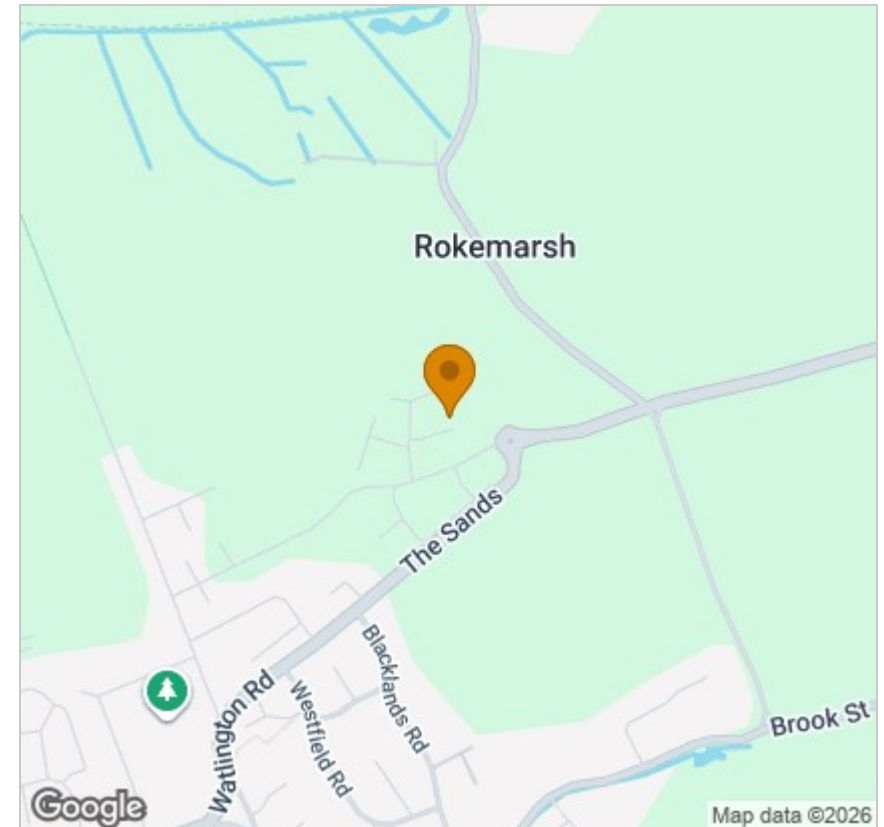


Energy Efficiency Graph

## Floor Plan



## Area Map



## Viewing

Please contact our In House Sales & Lettings Office on 01491 839999 opt.1  
if you wish to arrange a viewing appointment for this property or require further information.

These particulars, whilst believed to be accurate are set out as a general outline only for guidance and do not constitute any part of an offer or contract. Intending purchasers should not rely on them as statements of representation of fact, but must satisfy themselves by inspection or otherwise as to their accuracy. No person in this firm's employment has the authority to make or give any representation or warranty in respect of the property.

28 St Martins Street, Wallingford, Oxfordshire, OX10 0AL  
Tel: 01491 839999 opt.1 Email: [sales@inhouseestateagents.co.uk](mailto:sales@inhouseestateagents.co.uk) [www.inhouseestateagents.co.uk](http://www.inhouseestateagents.co.uk)